

# Submittal Data Sheet

## RoughinBox™ Series RBX1-CD-NC Center Drain RBX2-SD-NC Side Drain

### Project Information:

Job Name:

Location:

Engineer:

Submitted to:

For:  Reference  Approval  Construction

Submitted by:

Reference:

### Submittal Information:

Approval:

Date:

Construction:

Unit #:

Drawing #:

### (Section 1) Product Specifications

#### RBX1-CD-NC Center Drain Version

Dimensions:

Width: 14.5" Height: 10" Depth: 3.5"

Faceplate opening: 13"x3.75"

Lineset inlet ports: 2 @ 2.5"x3.75"

Wiring inlet ports: 1/2" or 3/4"

Drain outlet Sizes: 5/8" barb or 3/4" Male NPT

Direct Drain connect option: Yes

Material: Polyethylene

Fire rated: No

Optional Side entry lineset ports: Yes

Reversable: Yes

Faceplate forms optional mounting base for pump/reservoir: Yes

Stud Centers: 16"

Fits wooden studs: Yes

Integral adaptors for metal studs: Yes

#### RBX2-SD-NC Side Drain Version

Dimensions:

Width: 14.5" Height: 6.7" Depth: 3.5"

Faceplate opening: 13"x3.25"

Lineset inlet ports: 2 @ 2.5"x3.75"

Wiring inlet ports: 1/2" or 3/4"

Drain outlet Sizes: 5/8" barb or 3/4" Male NPT

Direct Drain connect option: Yes

Material: Polyethylene

Fire rated: No

Optional Side entry lineset ports: Yes

Reversable: Yes

Faceplate forms optional mounting base for pump/reservoir: Yes

Stud Centers: 16"

Fits wooden studs: Yes

Integral adaptors for metal studs: Yes

### (Section 2) Ordering Information:

**Model: RBX1-CD-NC Center Drain RoughinBox**

Packing Quantity: 1

Weight: 1.125 lbs.

**Model: RBX2-SD-NC Side Drain RoughinBox**

Packing Quantity: 1

Weight: 1 lb.

Installation video & PowerPoint version available at [www.marketair.com](http://www.marketair.com)

### (Section 3) Packing Contents:

1 RoughinBox

4 Mounting adaptors

2 Faceplate retainer Clips

1 Evaporator bracket support

1 Direct Drain Connection Adaptor

1 Installation instruction sheet



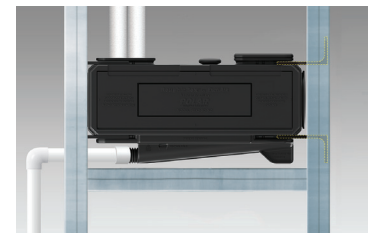
(Figure 1) RBX-1 Product Image



(Figure 2) Typical RBX-1 Center Drain RoughinBox location



(Figure 3) RBX-2 Product Image



(Figure 4) Typical RBX-2 Side Drain RoughinBox location